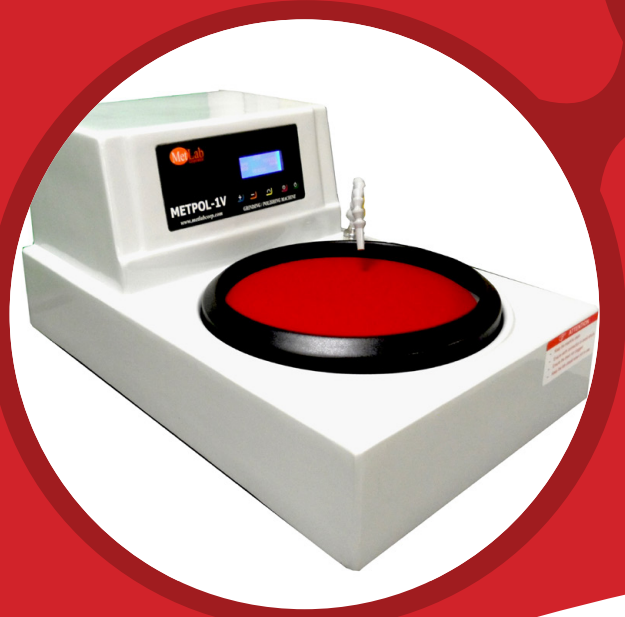


METPOL

1V & 2V POLISHERS



**2 YEAR
WARRANTY**

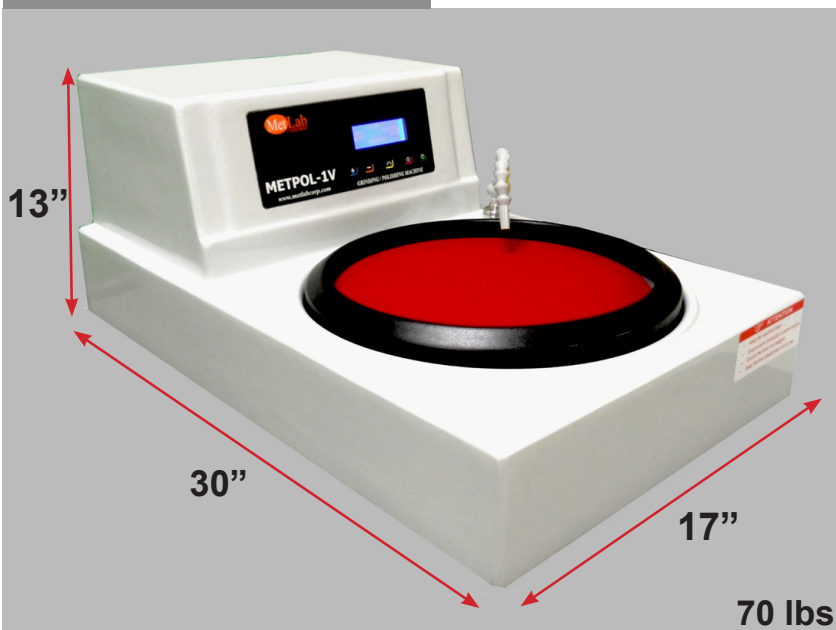
MetLab
Corporation

METPOL

POLISHER / GRINDER

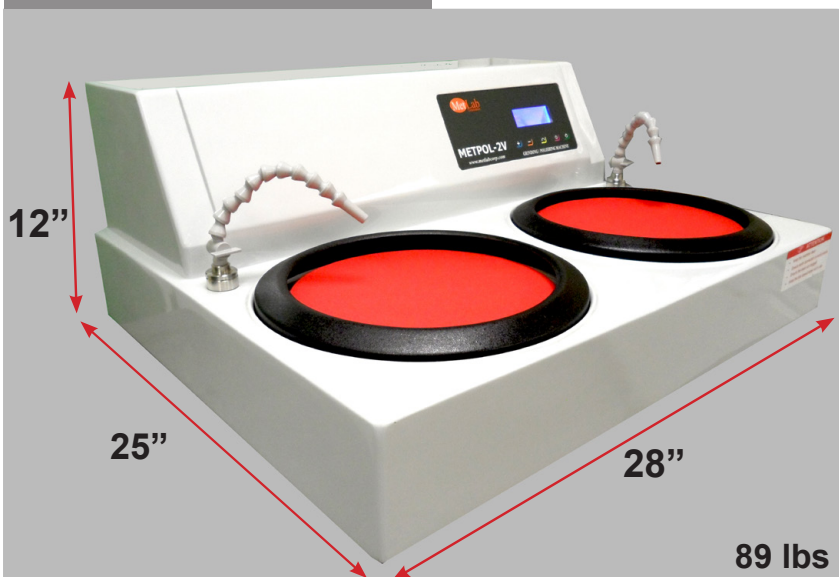
METPOL series of grinding / polishing machines offer an economical solutions to your metallographic sample preparation needs with variable speeds from 50-600 rpm. along with a feather touch digital control panel and detachable water coolant sprayer. All contained within a FRP body construction.

METPOL 1V



- Variable Speed 50-600 rpm
- Feather Touch Digital
- Detachable Water Sprayer
- ½ Hp Motor
- Free Flow Drain System
- Aluminum Disc(s) included
- Splash Guard(s) included
- Wheel Cover(s) included
- 110v 1-phase 60Hz
- Corrosion Resistant Wash Bowl
- FRP Body Construction

METPOL 2V



SPRAY NOZZLE



Technical Specifications

Model Type	Metpol 1V	Metpol 2V
Part #	37 03	37 02
Wheel Size	12" (300mm) SINGLE	8" (200mm) & 10" (250mm) DUAL
Motor Hp	1/2 Hp	1/2 Hp
Wheel Speed Variable	50-600 rpm	50-600 rpm
Dimensions	13"H x 30"L x 17"W	12"H x 25"L x 28"W
Weights	70lbs & 32kg	89lbs & 41kg
Main	110V, 1 phase, 50/60 Hz	110V, 1 phase, 50/60 Hz

Accessories

32 01	8" Aluminium Wheel
32 02	10" Aluminium Wheel
32 03	12" Aluminium Wheel
32 04	8" Splash Guard
32 05	10" Splash Guard
32 06	12" Splash Guard
32 07	8" / 10" Cover
32 09	12" Cover
PHB-8	8" Paper Holding Band
PHB-10	10" Paper Holding Band
PHB-12	12" Paper Holding Band
CHB-8	8" Cloth Holding Band
CHB-10	10" Cloth Holding Band
CHB-12	12" Cloth Holding Band

COVER



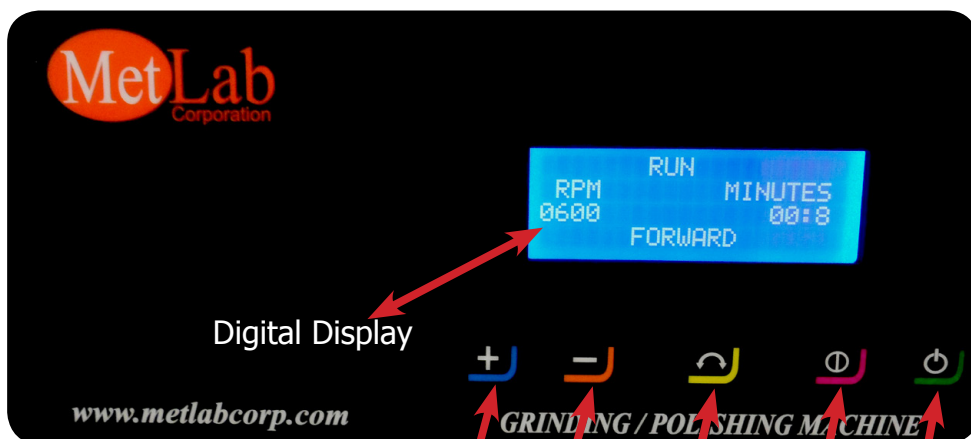
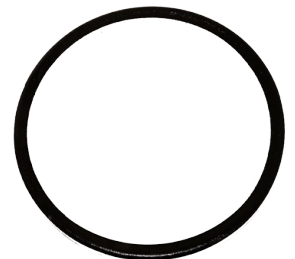
SPLASH GUARD



CLOTH HOLDING PAPER



PAPER HOLDING BAND



Digital Display

RPM / Time Increment

RPM / Time Decrement

Disc- Forward / Reverse

Disc - Stop / Run

Power On / Off

Abrasive Grinding Discs

PRODUCTION GRADE

WET / DRY SILICON CARBIDE C WEIGHT ABRASIVE GRINDING DISCS are manufactured in North America and are classified to U.S standards. FEPA is grit classification according to abrasives manufactured in Europe and are classified to European standards.

PLAIN

Grit	Qty	200mm (7.87")	250mm (9.84")	300mm (11.81")
60	100	M106-60-PRO	M180-60-PRO	M120-60-PRO
120	100	M106-120-PRO	M180-120-PRO	M120-120-PRO
180	100	M106-180-PRO	M180-180-PRO	M120-180-PRO
240	100	M106-240-PRO	M180-240-PRO	M120-240-PRO
320	100	M106-320-PRO	M180-320-PRO	M120-320-PRO
400	100	M106-400-PRO	M180-400-PRO	M120-400-PRO
600	100	M106-600-PRO	M180-600-PRO	M120-600-PRO

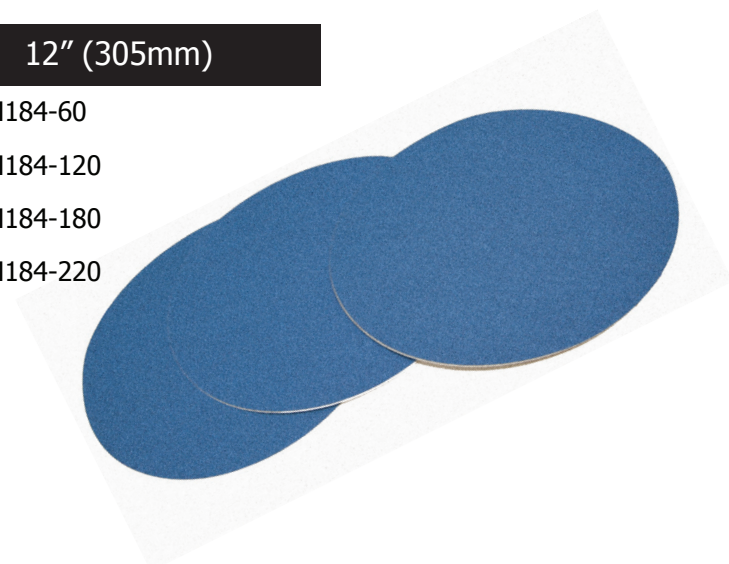
PSA / ADHESIVE

Grit	Qty	200mm (7.87")	250mm (9.84")	300mm (11.81")
60	100	M112-60-PRO	M114-60-PRO	M115-60-PRO
120	100	M112-120-PRO	M114-120-PRO	M115-120-PRO
180	100	M112-180-PRO	M114-180-PRO	M115-180-PRO
240	100	M112-240-PRO	M114-240-PRO	M115-240-PRO
320	100	M112-320-PRO	M114-320-PRO	M115-320-PRO
400	100	M121-400-PRO	M114-400-PRO	M115-400-PRO
600	100	M112-600-PRO	M114-600-PRO	M115-600-PRO

Zirconia Alumina Discs

WET / DRY ZIRCONIA ALUMINA C WEIGHT ABRASIVE GRINDING DISCS P.S.A. BACK are manufactured in North America and are classified to U.S standards.

Grit	Qty	8" (203mm)	12" (305mm)
60	25	M183-60	M184-60
120	25	M183-120	M184-120
180	25		M184-180
220	25		M184-220



Abrasive Grinding Discs

PREMIUM GRADE

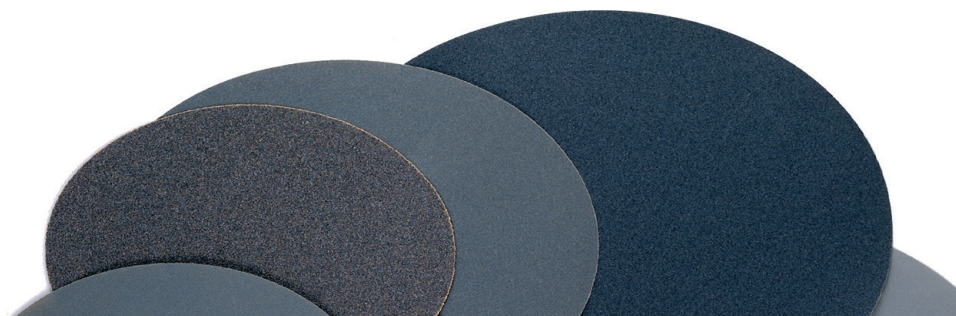
WET / DRY SILICON CARBIDE C WEIGHT ABRASIVE GRINDING DISCS are manufactured in North America and are classified to U.S standards. FEPA is grit classification according to abrasives manufactured in Europe and are classified to European standards.

PLAIN

Grit	Qty	8" (203mm)	10" (254mm)	12" (305mm)
60	100	M106-60	M180-60	M120-60
80	100		M180-80	
120	100	M106-120	M180-120	M120-120
180	100	M106-180	M180-180	M120-180
240	100	M106-240	M180-240	M120-240
320	100	M106-320	M180-320	M120-320
400	100	M106-400	M180-400	M120-400
600	100	M106-600	M180-600	M120-600
800	100	M106-800	M180-800	M120-800
1200	100	M106-1200	M180-1200	M120-1200

PSA / ADHESIVE

Grit	Qty	8" (203mm)	10" (254mm)	12" (304mm)
60	100	M112-60	M160-60	M115-60
120	100	M112-120	M160-120	M115-120
180	100	M112-180	M160-180	M115-180
240	100	M112-240	M160-240	M115-240
320	100	M112-320	M160-320	M115-320
400	100	M112-400	M160-400	M115-400
600	100	M112-600	M160-600	M115-600
800	100	M112-800	M160-800	M115-800
1200	100	M112-1200	M160-1200	M115-1200



Diamond Suspension

WATER / OIL SOLUABLE

METLAB highest quality virgin diamond particles which are presently used in our widely acceptable diamond compounds and airsprays have now been formulated into our new Diamond Suspensions. These suspensions are suitable for use in power lapping, general polishing applications or in automated diamond dispensing systems.

MONOCRYSTALLINE

μm	airspray 8 oz	bottle only 8 oz	trigger spray 16 oz	refill 32 oz	refill 128 oz
.10	M240	M250	M260	M260-32	M260-128
.25	M241	M251	M261	M261-32	M261-128
.50	M242	M252	M262	M262-32	M262-128
1	M243	M253	M263	M263-32	M263-128
3	M244	M254	M264	M264-32	M264-128
6	M245	M255	M265	M265-32	M265-128
9	M246	M256	M266	M266-32	M266-128
15	M247	M257	M267	M267-32	M267-128
30	M248	M258	M268	M268-32	M268-128
45	M249	M259	M269	M269-32	M269-128

POLYCRYSTALLINE

μm	bottle only 8 oz	finger pump 8 oz	trigger spray 16 oz	refill 32 oz	refill 128 oz
.25	M270	M280	M280-16	M280-32	M280-128
1	M271	M281	M281-16	M281-32	M281-128
3	M272	M282	M282-16	M282-32	M282-128
6	M273	M283	M283-16	M283-32	M283-128
9	M274	M284	M284-16	M284-32	M284-128
15	M275	M285	M285-16	M285-32	M285-128
30	M276	M286	M286-16	M286-32	M286-128
45	M277	M287	M287-16	M287-32	M287-128



Polishing Compound

MONOCRYSTALLINE

WATER / OIL SOLUABLE

μm	5 gram	20 gram
1/4	M200	M201
1	M202	M203
3	M204	M205
6	M206	M207
9	M208	M209
15	M210	M211
30	M212	M213
45	M214	M215



POLYCRYSTALLINE

WATER BASED

μm	10 gram
1/4	M200P
1	M202P
3	M204P
6	M206P
9	M208P
15	M210P
30	
45	



Aerosol Spray

POLYCRYSTALLINE

WATER SOLUABLE

μm	5 oz (inverted)
.25	M288
1	M289
3	M290
6	M291
9	M292
15	M293
30	M294
45	M295



Diamond Suspension

POLYCRYSTALLINE

OIL SOLUABLE / WATER FREE

μm	bottle only	trigger spray
	8 oz	16 oz
.25	M260-P25	M260-16
1	M261-P1	M261-16
3	M262-P3	M262-16
6	M260-P6	M260-P-16
9	M261-P9	M261-P-16
15	M262-P15	M262-P-16

Colloidal Silica

μm	Type	QUART	GALLON
≈ 0.06	Colloidal Silica	M306-32	M306-128

COLLOIDAL SILICA (BLUE) Used for chemical/mechanical polishing on oxides, metals, semi conductors and ceramic based materials.

≈ 0.04	OPS Colloidal Silica (pH 10.5)	M511-OPSQ	M511-OPSG
--------	--------------------------------	-----------	-----------

OPS COLLOIDAL SILICA (WHITE) Has been formulated to reduce polishing time and are priced very economically. OPS under normal use may be diluted with water. Used for non-ferrous metals and very ductile materials like refractory metals and others.



Dia-Lube Suspension

DIA-LUBE SUSPENSION WITH COOLING LUBRICANTS. A unique blend of quality high performance diamonds accompanied with cooling lubricants. This process ensures a faster and more cost efficient sample preparations.

WITH COOLING LUBRICANTS

Description		16 oz	128 oz
DiaLube Allegra	MD Allegra polishing cloth for fine grinding (water based)	M280-16DL	M280-128DL
DiaLube Plan	MD Plan polishing cloth for fine grinding (no solvents)	M281-16DL	M281-128DL
DiaLube Mol	MD Mol polishing cloth (contains no solvents)	M282-16DL	M282-128DL
DiaLube Dac	MD Dac polishing cloth (contains no solvents)	M283-16DL	M283-128DL
DiaLube Plus	MD Plus polishing cloth (contains no solvents)	M284-16DL	M284-128DL
DiaLube Nap	MD Nap polishing cloth (contains no solvents)	M285-16DL	M285-128DL

Diamond Polishing Extenders

Type	Quart	Gallon	5 Gallon
PURPLE (ALCOHOL BASED)	M225-32	M225-128	M225-640
GREEN (WATER BASED)	M226-32	M226-128	M226-640
RED (WATER/OIL BASED)	M227-32	M227-128	M227-640
BROWN (ALCOHOL BASED)	M220-32		
BLUE LUBE (ETHANOL BASED)	M222	M223	M224

Alcohol-based, general polishing of most materials. No ethylene glycol.

Water-based, general polishing of most materials.

Water / oil based, final polishing softer materials.

Alcohol based for fine grinding on all materials. Used with water free diamond suspension.

Alcohol-based, general polishing on most materials.



Alumina Powders

ALUMINA POWDERS are agglomerate-free, they are calcined to a high purity of 99.9% and then “deagglomerated” to break down the large agglomerates which would otherwise cause scratches. The result is a superior alumina that provides a faster time to a scratch-free finish.

µm	1 lb	5 lbs
0.05	M300	M300-80
0.3	M301	M301-80
1	M302	M302-80



Alumina Suspensions

µm	Type	Quart	Gallon
0.05	Gamma B Alumina	M303-32	M303-128
0.3	Alpha A Alumina	M304-32	M304-128
0.1	Alpha SP Alumina	M310-32	M310-128
1.0	Alpha C Alumina	M305-32	M305-128



ALUMINA SUSPENSIONS are also de-agglomerated . 99.99% pure and permanently remain in solution. The neutral non-toxic base will not dry out on the polishing pad and is completely water soluble.

MD Fugo Discs

8" (203mm)	10" (254mm)	12" (305mm)	Qty
M194-8	M194-10	M194-12	5/PKG

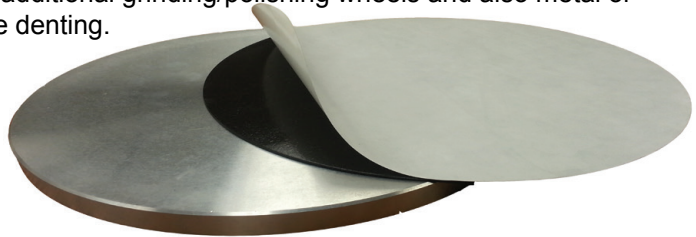
MD FUGO DISCS are rubber discs with an adhesive side which are used to attach non-adhesive paper to the wheels.



Magnetic Disc Fixation System

8" (203mm)	10" (254mm)	12" (305mm)	Qty
M195-8	M195-10	M195-12	1

This system provides for a quick convenient method for applying, removing, and reusing paper discs and polishing cloths from your grinding/polishing wheel. The system is comprised of two parts, the first part being a magnetic disc which has a pressure sensitive adhesive backing (PSA) and is applied to the wheel. The second part is our unique flexible rubber metal disc which in turn is placed on the magnetic disc. The rubber metal material is rustproof, durable, and reusable, has no sharp edges and sticks to the magnetic disc-like steel. Our rubber metal discs accept both PSA and plain backed grinding discs and polishing cloths. Our MAGNETIC DISC SYSTEM eliminates the expense of additional grinding/polishing wheels and also metal or bimetallic plates which are subject to bending and edge denting.

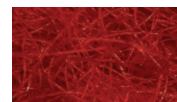
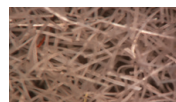
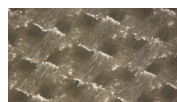
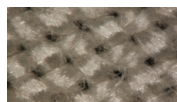
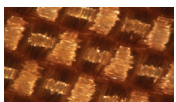


Grit Grabbers

8" (203mm)	10" (254mm)	12" (305mm)	Qty
M175	M176	M177	10/PKG

Polishing Cloths

CLOTH	TYPE		203 mm	203 mm	305 mm
COTTON	PLAIN	10/PKG	M590-8PL	M590-10PL	M590-12PL
CHEM PAD	PSA	5/PKG	M660-8PS	M660-10PS	M660-12PS
	MD	5/PKG	M660-8MD	M660-10MD	M660-12MD
DIA DAC	PSA	5/PKG	M615-8PS	M615-10PS	M615-12PS
	MD	5/PKG	M615-8MD	M615-10MD	M615-12MD
DIA NAP	PSA	5/PKG	M630-8PS	M630-10PS	M630-12PS
	MD	5/PKG	M630-8MD	M630-10MD	M630-12MD
DIA MOL	PSA	5/PKG	M620-8PS	M620-10PS	M620-12PS
	MD	5/PKG	M620-8MD	M620-10MD	M620-12MD
DIA PLUS	PSA	5/PKG	M625-8PS	M625-10PS	M625-12PS
	MD	5/PKG	M625-8MD	M625-10MD	M625-12MD
DP PLAN	PSA	10/PKG	M610-8PS	M610-10PS	M610-12PS
	MD	5/PKG	M610-8MD	M610-10MD	M610-12MD
GOLD LABEL	PSA	10/PKG	M537-8PS	M537-10PS	M537-12PS
METLAB (MICRO)	PLAIN	10/PKG	M500-8PL	M500-10PL	M500-12PL
	PSA	10/PKG	M500-8PS	M500-10PS	M500-12PS
	MD	5/PKG	M500-8MD	M500-10MD	M500-12MD
PAN W	PSA	10/PKG	M560-8PS	M560-10PS	M560-12PS
	MD	5/PKG	M560-8MD	M560-10MD	M560-12MD
RED FELT	PSA	10/PKG	M570-8PS	M570-10PS	M570-12PS
SILK	PLAIN	10/PKG	M530-8PL	M530-10PL	M530-12PL
	PSA	10/PKG	M530-8PS	M530-10PS	M530-12PS
VEL LAP	PSA	10/PKG	M536-8PS	M536-10PS	M536-12PS



Diamond Lapping Film

DIAMOND LAPPING FILM DISCS are micron graded diamond particles resin bonded to a uniform 3-mil polyester film backing. This offers a cleaner, more consistent alternative to diamond compounds or slurries. Used to finish and polish hard to grind materials such as glass, ceramics, hardened metals, composites and micro-electronic materials for SEM and TEM analysis. Used wet or dry.

µm	8"		10"	
	Plain	5/PKG P SA	Plain	5/PKG P SA
0.10	M507-10PL	M507-10PS	M509-10PL	M509-10PS
0.25	M507-25PL	M507-25PS	M509-25PL	M509-25PS
0.5	M507-05PL	M507-05PS	M509-05PL	M509-05PS
1	M507-1PL	M507-1PS	M509-1PL	M509-1PS
3	M507-3PL	M507-3PS	M509-3PL	M509-3PS
6	M507-6PL	M507-6PS	M509-6PL	M509-6PS
9	M507-9PL	M507-9PS	M509-9PL	M509-9PS
15	M507-15PL	M507-15PS	M509-15PL	M509-15PS
30	M507-30PL	M507-30PS	M509-30PL	M509-30PS

µm	12"	
	Plain	3/PKG P SA
0.10	M508-10PL	M508-10PS
0.25	M508-25PL	M508-25PS
0.5	M508-05PL	M508-05PS
1	M508-1PL	M508-1PS
3	M508-3PL	M508-3PS
6	M508-6PL	M508-6PS
9	M508-9PL	M508-9PS
15	M508-15PL	M508-15PS
30	M508-30PL	M508-30PS



PLEASE SEE CATALOG FOR EXTENSIVE PRODUCT SELECTIONS

www.metlabcorp.com



4011 Hyde Park Blvd. Niagara Falls NY, 14305
1-800-828-6866